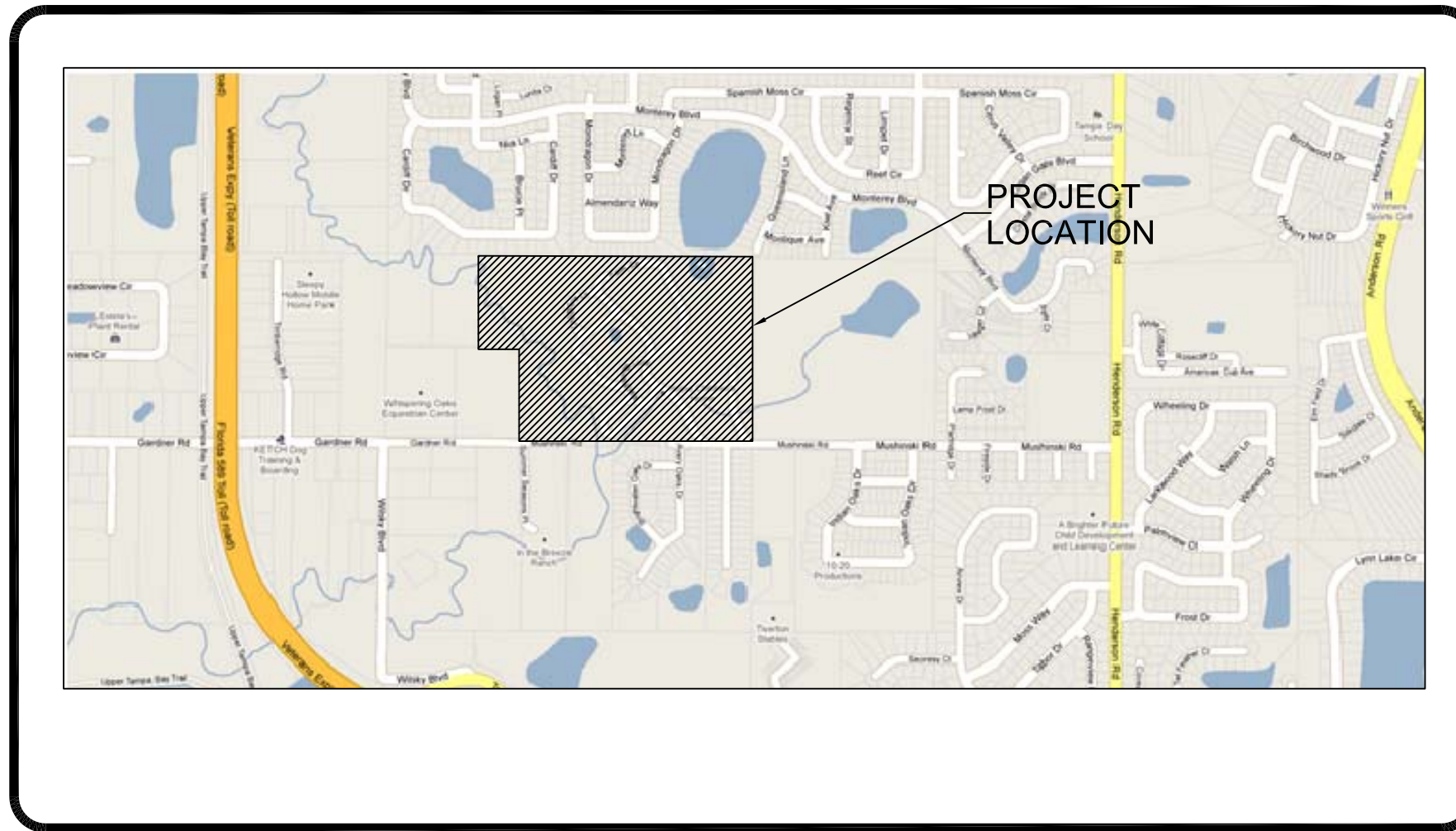


SHEET	DESCRIPTION
C-1	COVER SHEET
C-2	SITE & HORIZONTAL CONTROL PLAN
C-3	GRADING AND DRAINAGE PLAN
C-4	X-SECTIONS AND DRAINAGE DETAILS
C-5	LANDSCAPE PLAN
C-6	AEROBIC SEPTIC PLAN
C-7	FIRE TANK PLAN
C-8	PHASING PLAN
C-9	BASIN MAPS
C-10	EXISTING CONDITIONS & DEMOLITION PLAN
C-11	IMPAIRED WATER TREATMENT PLAN

INDEX OF DRAWINGS



LOCATION MAP

GENERAL NOTES

- THE CONTRACTOR SHALL BE RESPONSIBLE FOR OBTAINING ALL PERMITS FROM THE OWNER PRIOR TO COMMENCEMENT OF CONSTRUCTION AND THOROUGHLY REVIEWING AND UNDERSTANDING ALL PERMIT CONDITIONS. ALL WORK SHALL COMPLY WITH THE REQUIREMENTS THE PERMITS. ANY ADDITIONAL CONSTRUCTION BUILDING PERMITS REQUIRED TO EXECUTE/COMPLETE THE WORK SHOWN IN THESE DOCUMENTS SHALL BE OBTAINED BY THE CONTRACTOR.
- ALL CONSTRUCTION MATERIALS AND METHODS SHALL CONFORM TO THE LATEST EDITION OF HILLSBOROUGH COUNTY LAND DEVELOPMENT CODE AND ALL COUNTY TECHNICAL STANDARDS.
- ALL ELEVATION DATA IS BASED ON THE NATIONAL GEODETIC VERTICAL DATUM (NAVD) OF 1988.
- THE CONTRACTOR SHALL BE RESPONSIBLE FOR COORDINATING ALL WORK WITH SUBCONTRACTORS AND OTHER PUBLIC OR PRIVATE UTILITIES CONSTRUCTING FACILITIES WITHIN THE PROJECT LIMITS.
- THE CONTRACTOR SHALL SOLID SOD ALL SLOPES STEEPER THAN 5:1 AND WITHIN COUNTY/FDOT RW, AND SEED AND MULCH ALL OTHER AREAS DISTURBED BY CONSTRUCTION. IT IS THE CONTRACTOR'S RESPONSIBILITY TO MAINTAIN SOD/SEED AND MULCH UNTIL STABILIZATION HAS OCCURRED.
- CONTRACTOR SHALL CONTACT THE ENGINEER AND/OR OWNER PRIOR TO ANY CONSTRUCTION ACTIVITY THAT MAY DAMAGE OR OTHERWISE AFFECT TREES.
- EXISTING UNDERGROUND UTILITY LINES SHOWN ON THE DRAWINGS WERE TAKEN FROM RECORD DRAWINGS AND DOCUMENTS FURNISHED BY OTHERS, AND NOT FIELD VERIFIED. THE CONTRACTOR SHALL FIELD VERIFY THE LOCATION OF ALL UNDERGROUND UTILITIES WHICH MAY BE AFFECTED BY THE PROPOSED CONSTRUCTION, PRIOR TO ACTUAL CONSTRUCTION. THE ENGINEER SHALL BE IMMEDIATELY NOTIFIED IF A CONFLICT EXISTS BETWEEN ACTUAL FIELD CONDITIONS AND THESE PLANS. CALL SUNSHINE STATE ONE CALL AT 1-800-432-4770 MIN. 48 HOURS BEFORE DIGGING.
- THE CONTRACTOR SHALL COORDINATE ALL CONSTRUCTION, INCLUDING TESTING, WITH ENGINEER AND APPROPRIATE CITY OF CLEARWATER INSPECTORS IN ACCORDANCE WITH HILLSBOROUGH COUNTY REQUIREMENTS.
- THE CONTRACTOR SHALL BE RESPONSIBLE FOR OBTAINING ANY PERMITS THAT IS NOT PROVIDED BY THE ENGINEER OR OWNER. THESE PERMITS MAY BE ROAD CROSSING, ONSITE PIPING PERMIT, UTILITY, SITE CLEARING, AND ALL PERMITS FROM THE GOVERNMENTAL AGENCIES HAVING JURISDICTION OVER THE PROJECT SITE.
- THE CONTRACTOR SHALL BE RESPONSIBLE FOR FURNISHING ALL FILED AND ACTUAL INFORMATION TO THE ENGINEER FOR THE PREPARATION OF RECORD DRAWINGS. A MARK-UP "IN RED" SET OF PLANS SHALL BE AVAILABLE AT ALL TIME AT THE CONSTRUCTION SITE. FINAL FIELD CONDITIONS SHALL BE SURVEYED BY A LICENSE SURVEYOR. TEN CERTIFIED AS-BUILT SURVEYS SHALL BE FURNISHED TO THE ENGINEER AFTER THE FINAL INSPECTION.
- ALL PAVEMENT CUT/FILLING SHALL MEET THE FOLLOWING REQUIREMENTS:
 - COMPACTED TO A DENSITY OF NOT LESS THAN 98% PER ASTM D 1557-70.
 - DENSITY TEST SHALL BE CONDUCTED EVERY 12" OF COMPACTED DEPTH OR AS DIRECTED BY THE ENGINEER.
- THE INFORMATION PROVIDED IN THESE PLANS IS SOLELY TO ASSIST THE CONTRACTOR IN ASSESSING THE NATURE AND EXTENT OF THE CONDITIONS WHICH MAY BE ENCOUNTERED DURING THE COURSE OF WORK. ALL CONTRACTORS ARE DIRECTED, PRIOR TO BIDDING, TO CONDUCT WHATEVER INVESTIGATIONS THEY MAY DEEM NECESSARY TO ARRIVE AT THEIR OWN CONCLUSIONS REGARDING THE ACTUAL CONDITIONS THAT WILL BE ENCOUNTERED, AND UPON WHICH THEIR BIDS WILL BE BASED UPON.
- EROSION / SEDIMENTATION CONTROL
CONTRACTOR IS TO PROVIDE EROSION CONTROL/SEDIMENTATION BARRIER (MAY BALES OR SILTATION CURTAIN) TO PREVENT SILTATION OF ADJACENT PROPERTY, STREETS, STORM SEWERS AND WATERWAYS. IN ADDITION CONTRACTOR SHALL PLACE STRAW, MULCH OR OTHER SUITABLE MATERIAL ON GROUND IN AREAS WHERE CONSTRUCTION RELATED TRAFFIC IS TO ENTER AND EXIT THE SITE. IF, IN THE OPINION OF THE ENGINEER AND/OR LOCAL AUTHORITIES, EXCESSIVE QUANTITIES OF EARTH ARE TRANSPORTED OFF-SITE EITHER BY NATURAL DRAINAGE OR VEHICULAR TRAFFIC, THE CONTRACTOR IS TO REMOVE AND CLEAN TO THE SATISFACTION OF THE ENGINEER AND/OR AUTHORITIES.



CONSTRUCTION PLANS
COTTAGES OF HOPE
11404 HOPE INTERNATIONAL DR
TAMPA, FL 33625
STR 13/28S/17E
FOLIO NO. 003690-0000

PREPARED FOR:
HOPE INTERNATIONAL MINISTRIES INC
11415 HOPE INTERNATIONAL DR,
TAMPA, FL 33625-3963

LEGAL DESCRIPTION: (OVERALL PARCEL)
THE EAST 1/4 OF THE NORTHWEST 1/4 OF THE NORTHWEST 1/4, LESS THE SOUTH 25 FEET THEREOF, AND THE NORTH 1/2 OF THE WEST 1/2 OF THE EAST 1/4 OF THE NORTHWEST 1/4 OF THE NORTHWEST 1/4 OF SECTION 13, TOWNSHIP 28 SOUTH, RANGE 17 EAST, HILLSBOROUGH COUNTY, FLORIDA.
AND
THE WEST 1/2 OF THE NORTHEAST 1/4 OF THE NORTHWEST 1/4 OF SECTION 13, TOWNSHIP 28 SOUTH, RANGE 17 EAST, HILLSBOROUGH COUNTY, FLORIDA; LESS THE SOUTH 25 FEET THEREOF, AND LESS THE NORTH 15 FEET OF THE WEST 1/2 OF THE EAST 1/4 OF THE NORTHEAST 1/4 OF THE NORTHWEST 1/4 OF SECTION 13, TOWNSHIP 28 SOUTH, RANGE 17 EAST, HILLSBOROUGH COUNTY, FLORIDA.

LEGAL DESCRIPTION

SITE PREPARATION AND EARTHWORK NOTES

- EXCAVATION
CONTRACTOR SHALL PROVIDE SHORING, SHEETING, AND BRACING AS MAY BE NECESSARY TO PROPERLY ACCOMPLISH THIS WORK. UNDERGROUND UTILITIES TO REMAIN FROM DAMAGE, SHOULD ANY UTILITIES BE ENCOUNTERED THAT ARE NOT INDICATED ON THE PLANS NOTIFY THE OWNER'S REPRESENTATIVE.
 - DISPOSAL: SURPLUS MATERIAL FROM EXCAVATIONS, TRASH, DEBRIS AND MATERIALS RESULTING FROM CLEARING, GRUBBING, AND OTHER OPERATIONS SHALL BECOME THE PROPERTY OF CONTRACTOR AND SHALL BE DISPOSED OF BY REMOVING FROM THE SITE.
 - CLEARING AND GRUBBING: CLEAR AND GRUB TO REMOVE STUMPS, ROOTS, TREES, VEGETATION, ORGANIC MATERIALS, EXISTING PAVEMENT, STRUCTURES AND OTHER OBSTRUCTIONS TO THE WORK. ALL ORGANIC SOILS OR MUCK SHALL BE REMOVED AND BACKFILLED WITH SUITABLE MATERIALS.

STRIP THE TOPSOIL FROM ALL AREAS WITHIN THE LIMITS OF CLEARING AND GRUBBING AND STOCKPILE ON THE SITE. TOPSOIL MAY BE SPREAD OVER AREAS OUTSIDE BUILDING AND PAVING LINES UPON COMPLETION OF ROUGH GRADING.
- GRADING
GRADE THE SITE TO THE FINISHED CONTOURS INDICATED. IMMEDIATELY BEFORE REQUESTING FINAL INSPECTIONS, CHECK THE LINES AND DRESS TO THE PROPER CONTOURS. ALL AREAS ARE TO BE STABILIZED, THESE AREAS ARE TO BE MAINTAINED UNTIL ACCEPTANCE BY OWNER. WHEN SOD, PLANT BEDS, GRAVEL AREAS AND THE LIKE ARE INDICATED ON LANDSCAPE DRAWINGS OR SPECIFIED, MAKE ALLOWANCES WHEN ROUGH GRADING FOR THE FINISHED GRADES IN THESE AREAS.
 - BORROW: SUITABLE EXCAVATED MATERIAL, AS DETERMINED BY THE OWNER'S REPRESENTATIVE, MAY BE USED FOR GRADING. PROCURE ADDITIONAL MATERIALS, WHERE NECESSARY, FROM BORROW PITS APPROVED BY THE OWNER'S REPRESENTATIVE AND FURNISH AT NO ADDITIONAL COST TO THE OWNER. BORROW MATERIALS SHALL HAVE PLASTIC INDEX OF SIX (6) OR LESS WITH A MAXIMUM OF 20 PERCENT PASSING A 200 SIEVE.
 - COMPACTION: AREAS OUTSIDE OF BUILDING AND PAVING LINES SHALL BE COMPACTED TO 90 PERCENT OF MAXIMUM DENSITY (ASSHTO T-180) AT OPTIMUM MOISTURE (ASTM D 1556).

PAVING AND DRAINAGE CONSTRUCTION NOTES

- REPORT OF SUBSURFACE CONDITIONS
A COPY OF THE SOILS INVESTIGATIONS REPORT IS AVAILABLE FROM TAMPA CIVIL DESIGN LLC, TELEPHONE NUMBER (727) 487-3497.

THE ENGINEER DISCLAIMS ALL RESPONSIBILITY FOR FINDINGS AND INTERPRETATIONS EXPRESSED IN THE REPORT BY THE TESTING LABORATORY. CONTRACTOR SHALL MAKE WHATEVER SUBSURFACE INVESTIGATIONS HE DEEMS NECESSARY TO SATISFY HIMSELF AS TO THE ACTUAL FIELD CONDITIONS.
- TESTING
THE CONTRACTOR WILL PAY FOR ALL TEST REQUIRED BY HILLSBOROUGH COUNTY EXCEPT THOSE PROVING SATISFACTORY OPERATION OF ALL INSTALLED EQUIPMENT, PRESSURE AND LEAKAGE TEST, AND BACTERIOLOGICAL TESTS, FOR PIPE, STRUCTURES, AND ASPHALTIC MATERIALS. THE MANUFACTURER'S OR SUPPLIER'S CERTIFICATE THAT THE MATERIALS MEET THE REQUIREMENTS OF THE OWNER'S REPRESENTATIVE. ANY TESTS WHICH HAVE TO BE MADE BECAUSE OF THE FAILURE OF INSTALLED MATERIALS TO MEET SPECIFICATIONS SHALL BE PAID FOR BY THE CONTRACTOR AND COSTS OF ANY SUCH TESTS SHALL BE DEDUCTED FROM PAYMENTS DUE THE CONTRACTOR.

THE OWNER WILL RETAIN A CERTIFIED ENGINEERING TESTING LABORATORY TO PERFORM ALL MATERIALS TESTING SPECIFIED IN THE TECHNICAL SPECIFICATION AND AS MAY BE REQUIRED BY THE APPROPRIATE GOVERNMENTAL AGENCY HAVING JURISDICTION. THE REQUIRED MATERIALS TESTING IS SUMMARIZED HEREIN ON THE ATTACHED TABLE FOR THE SUBCONTRACTOR TO ENSURE THAT THE REQUIRED TESTING HAS BEEN MADE PRIOR TO COVERING UP ANY OF THE WORK.

PREPARED BY

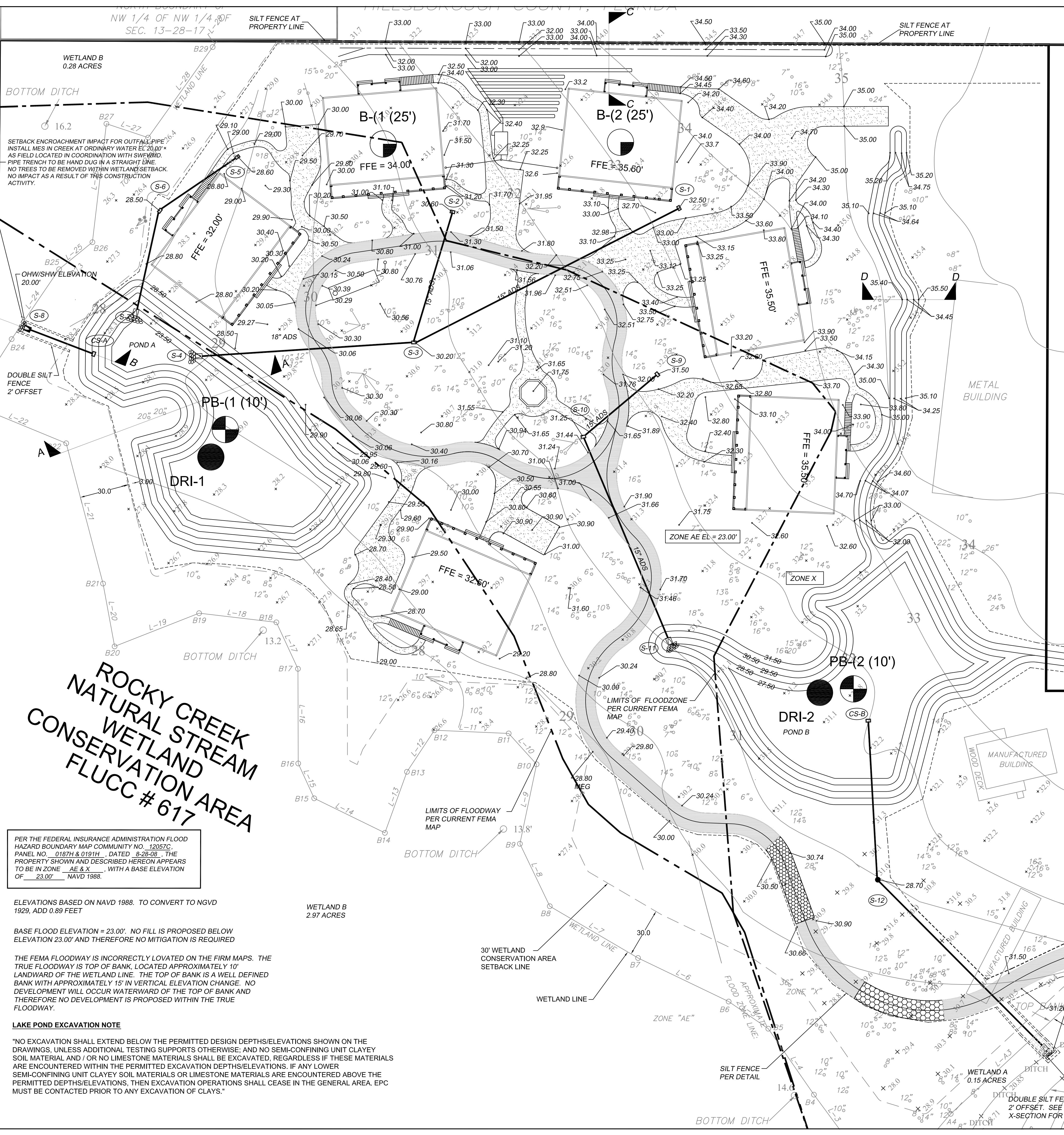
TAMPA CIVIL DESIGN

PO BOX NO. 1787
LUTZ, FL 33548-1787
(727) 487-3497 PHONE
(813) 482-9128 FAX

OCTOBER 2010

OWNER: HOPE INTERNATIONAL MINISTRIES INC 11415 HOPE INTERNATIONAL DR, TAMPA, FL 33625-3963 (813) 961-1214 CONTACT: DR. MIKE HIGGINS	CIVIL ENGINEER: TAMPA CIVIL DESIGN PO BOX NO. 1787 LUTZ, FL 33548-1787 (727) 487-3497 CONTACT: JEREMY COUCH, P.E.
SURVEYOR: SMITH SURVEYORS 1406 WEST LINEBAUGH AVE TAMPA, FL 33612 CONTACT: JOE HANLON	CONTRACTOR: THE FECHTEL COMPANY 3036 WEST BEARSS AVENUE TAMPA, FL 33618 (813) 264-7778 CONTACT: JAY FECHTEL

COTTAGES OF HOPE 10-014



SETBACK ENCROACHMENT IMPACT FOR OUTFALL PIPE
 INSTALL MES IN CREEK AT ORDINARY WATER EL 20.00' *
 AS FIELD LOCATED IN COORDINATION WITH SWFWMD.
 PIPE TRENCH TO BE HAND DUG IN A STRAIGHT LINE.
 NO TREES TO BE REMOVED WITHIN WETLAND SETBACK
 NO IMPACT AS A RESULT OF THIS CONSTRUCTION
 ACTIVITY.

**ROCKY CREEK
 NATURAL STREAM
 WETLAND
 CONSERVATION AREA
 FLUCC # 617**

PER THE FEDERAL INSURANCE ADMINISTRATION FLOOD
 HAZARD BOUNDARY MAP COMMUNITY NO. 12057C,
 PANEL NO. 0187H & 0191H, DATED 8-28-08, THE
 PROPERTY SHOWN AND DESCRIBED HEREON APPEARS
 TO BE IN ZONE AE & X WITH A BASE ELEVATION
 OF 23.00' NAVD 1988.

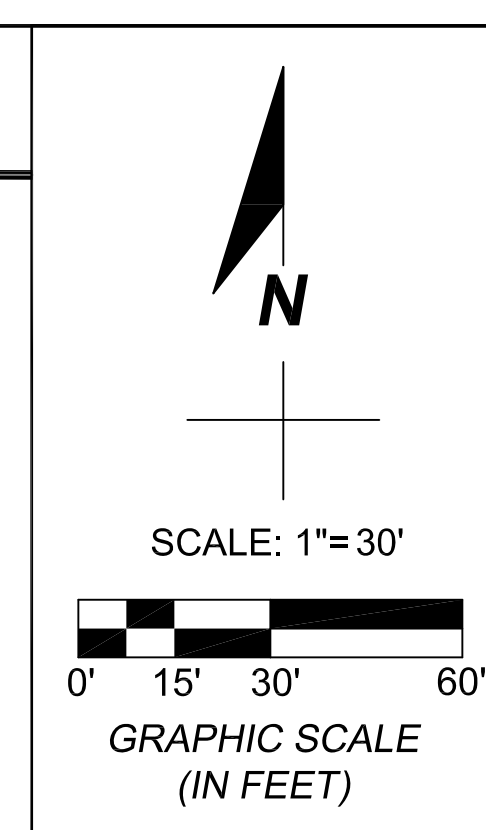
ELEVATIONS BASED ON NAVD 1988. TO CONVERT TO NGVD
 1929, ADD 0.89 FEET

BASE FLOOD ELEVATION = 23.00'. NO FILL IS PROPOSED BELOW
 ELEVATION 23.00' AND THEREFORE NO MITIGATION IS REQUIRED

THE FEMA FLOODWAY IS INCORRECTLY LOCATED ON THE FIRM MAPS. THE
 TRUE FLOODWAY IS TOP OF BANK, LOCATED APPROXIMATELY 10'
 LANDWARD OF THE WETLAND LINE. THE TOP OF BANK IS A WELL DEFINED
 BANK WITH APPROXIMATELY 15' IN VERTICAL ELEVATION CHANGE. NO
 DEVELOPMENT WILL OCCUR WATERWARD OF THE TOP OF BANK AND
 THEREFORE NO DEVELOPMENT IS PROPOSED WITHIN THE TRUE
 FLOODWAY.

LAKE POND EXCAVATION NOTE

"NO EXCAVATION SHALL EXTEND BELOW THE PERMITTED DESIGN DEPTHS/ELEVATIONS SHOWN ON THE
 DRAWINGS, UNLESS ADDITIONAL TESTING SUPPORTS OTHERWISE; AND NO SEMI-CONFINING UNIT CLAYEY
 SOIL MATERIAL AND / OR NO LATESTONE MATERIALS SHALL BE EXCAVATED, REGARDLESS IF THESE MATERIALS
 ARE ENCOUNTERED WITHIN THE PERMITTED EXCAVATION DEPTHS/ELEVATIONS. IF ANY LOWER
 SEMI-CONFINING UNIT CLAYEY SOIL MATERIALS OR LATESTONE MATERIALS ARE ENCOUNTERED ABOVE THE
 PERMITTED DEPTHS/ELEVATIONS, THEN EXCAVATION OPERATIONS SHALL CEASE IN THE GENERAL AREA. EPC
 MUST BE CONTACTED PRIOR TO ANY EXCAVATION OF CLAYS."



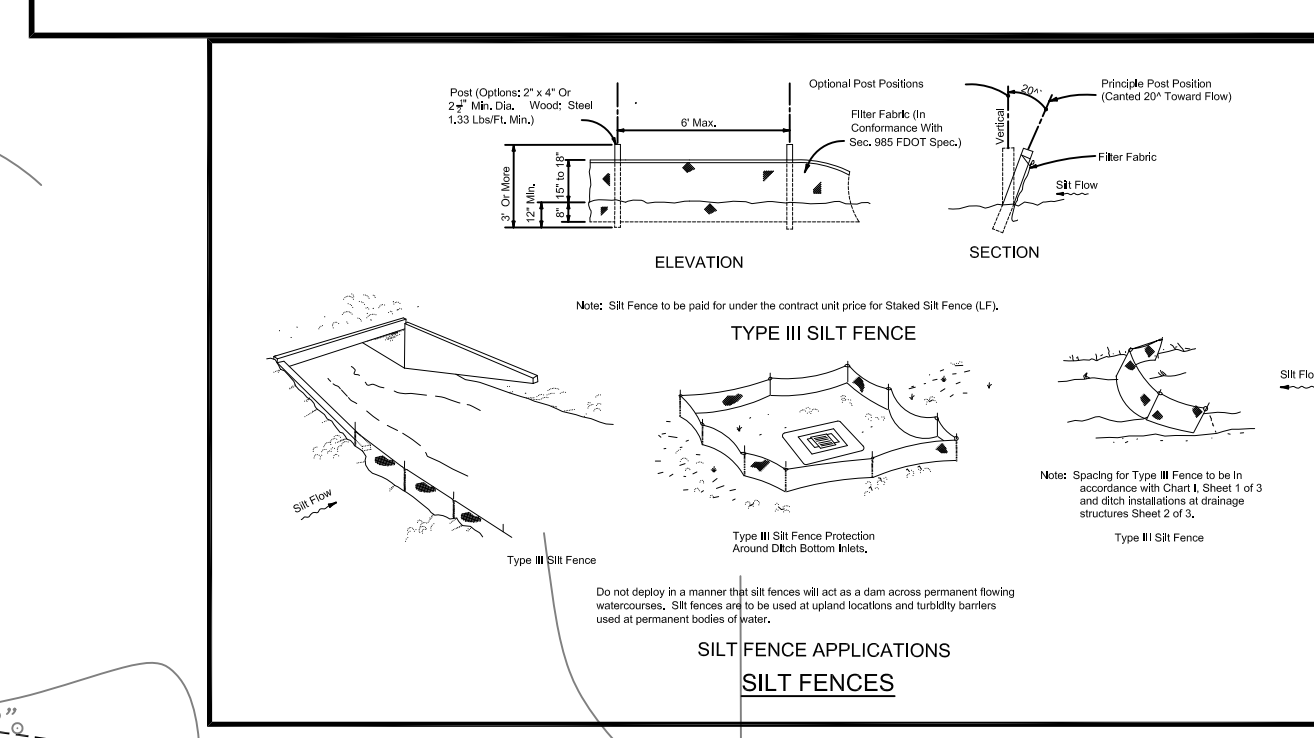
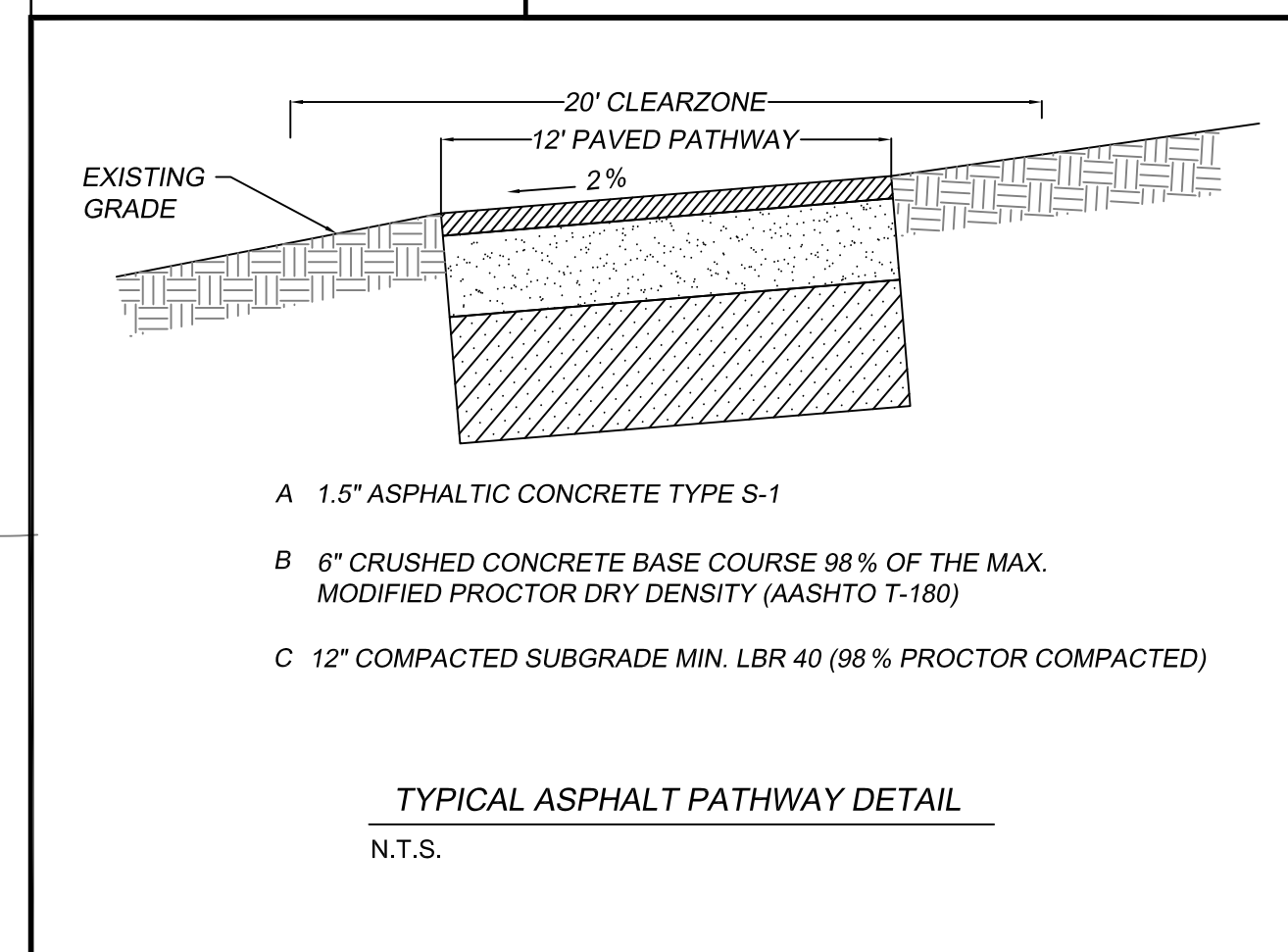
**CONSTRUCTION SURFACE WATER MANAGEMENT
 FOR
 COTTAGES OF HOPE**

A. PRIOR TO INITIATING THE CONSTRUCTION ACTIVITIES:
 1. THE CONTRACTOR MUST PROVIDE STAKED SILT SCREEN AROUND
 THE ENTIRE PROPERTY BOUNDARY. THE STAKED SILT
 SCREEN MUST BE INSTALLED STRICTLY AS PER FOOT
 STANDARD INDEX NO. 102
 2. THE CONTRACTOR MUST PROVIDE A FLOATING TURBIDITY BARRIER
 AROUND THE AREA OF THE OUTFALL CONTROL STRUCTURE
 ACCORDING TO FOOT STANDARD INDEX NO. 103
 3. THE CONTRACTOR MUST PROVIDE THE STABILIZED CONSTRUCTION
 ENTRANCE IN ACCORDANCE WITH FOOT STANDARD INDEX 102

B. DURING CONSTRUCTION:
 1. INSTALL THE SEDIMENT BASIN AND TRASH RETAINER TO PREVENT
 TRANSPORT OFF SITE IN ACCORDANCE WITH FOOT STANDARD
 INDEX 101
 2. CHECK SILT SCREEN AND TURBIDITY BARRIER DAILY AND AFTER A
 RAINFALL REINSTALL THE SILT SCREEN AND TURBIDITY BARRIER IF
 REQUIRED.

C. CONSTRUCTION CLOSE-OUT:
 1. SOD ALL SLOPES AND DISTURBED AREAS IMMEDIATELY.
 2. REMOVE SILT SCREEN AFTER ALL THE SLOPES ARE ESTABLISHED.

AGREED BY: AL SCHAFFER CERTIFIED BY: JEREMY COUCH P.E.



WETLAND IMPACT FOR OUTFALL PIPE
 (77 SF). INSTALL MES IN DITCH "6"
 ABOVE BOTTOM AT EL 21.00'. PIPE
 TRENCH TO BE HAND DUG IN A
 STRAIGHT LINE. NO TREES TO BE
 REMOVED. INSTALL RIP-RAP PER
 DETAIL.

WETLAND A
 2.97 ACRES

WETLAND B
 0.28 ACRES

WETLAND C
 0.15 ACRES

WETLAND D
 0.15 ACRES

WETLAND E
 0.15 ACRES

WETLAND F
 0.15 ACRES

WETLAND G
 0.15 ACRES

WETLAND H
 0.15 ACRES

WETLAND I
 0.15 ACRES

WETLAND J
 0.15 ACRES

WETLAND K
 0.15 ACRES

WETLAND L
 0.15 ACRES

WETLAND M
 0.15 ACRES

WETLAND N
 0.15 ACRES

WETLAND O
 0.15 ACRES

WETLAND P
 0.15 ACRES

WETLAND Q
 0.15 ACRES

WETLAND R
 0.15 ACRES

WETLAND S
 0.15 ACRES

WETLAND T
 0.15 ACRES

WETLAND U
 0.15 ACRES

WETLAND V
 0.15 ACRES

WETLAND W
 0.15 ACRES

WETLAND X
 0.15 ACRES

WETLAND Y
 0.15 ACRES

WETLAND Z
 0.15 ACRES

WETLAND AA
 0.15 ACRES

WETLAND AB
 0.15 ACRES

WETLAND AC
 0.15 ACRES

WETLAND AD
 0.15 ACRES

WETLAND AE
 0.15 ACRES

WETLAND AF
 0.15 ACRES

WETLAND AG
 0.15 ACRES

WETLAND AH
 0.15 ACRES

WETLAND AI
 0.15 ACRES

WETLAND AJ
 0.15 ACRES

WETLAND AK
 0.15 ACRES

WETLAND AL
 0.15 ACRES

WETLAND AM
 0.15 ACRES

WETLAND AN
 0.15 ACRES

WETLAND AO
 0.15 ACRES

WETLAND AP
 0.15 ACRES

WETLAND AQ
 0.15 ACRES

WETLAND AR
 0.15 ACRES

WETLAND AS
 0.15 ACRES

WETLAND AT
 0.15 ACRES

WETLAND AU
 0.15 ACRES

WETLAND AV
 0.15 ACRES

WETLAND AW
 0.15 ACRES

WETLAND AX
 0.15 ACRES

WETLAND AY
 0.15 ACRES

WETLAND AZ
 0.15 ACRES

WETLAND BA
 0.15 ACRES

WETLAND BB
 0.15 ACRES

WETLAND BC
 0.15 ACRES

WETLAND BD
 0.15 ACRES

WETLAND BE
 0.15 ACRES

WETLAND BF
 0.15 ACRES

WETLAND BG
 0.15 ACRES

WETLAND BH
 0.15 ACRES

WETLAND BI
 0.15 ACRES

WETLAND BJ
 0.15 ACRES

WETLAND BK
 0.15 ACRES

WETLAND BL
 0.15 ACRES

WETLAND BM
 0.15 ACRES

WETLAND BN
 0.15 ACRES

WETLAND BO
 0.15 ACRES

WETLAND BP
 0.15 ACRES

WETLAND BQ
 0.15 ACRES

WETLAND BR
 0.15 ACRES

WETLAND BS
 0.15 ACRES

WETLAND BT
 0.15 ACRES

WETLAND BU
 0.15 ACRES

WETLAND BV
 0.15 ACRES

WETLAND BV
 0.15 ACRES

WETLAND BW
 0.15 ACRES

WETLAND BX
 0.15 ACRES

WETLAND BY
 0.15 ACRES

WETLAND BZ
 0.15 ACRES

WETLAND CA
 0.15 ACRES

WETLAND CB
 0.15 ACRES

WETLAND CC
 0.15 ACRES

WETLAND CD
 0.15 ACRES

WETLAND CE
 0.15 ACRES

WETLAND CF
 0.15 ACRES

WETLAND CG
 0.15 ACRES

WETLAND CH
 0.15 ACRES

WETLAND CI
 0.15 ACRES

WETLAND CJ
 0.15 ACRES

WETLAND CK
 0.15 ACRES

WETLAND CL
 0.15 ACRES

WETLAND CM
 0.15 ACRES

WETLAND CN
 0.15 ACRES

WETLAND CO
 0.15 ACRES

WETLAND CP
 0.15 ACRES

WETLAND CQ
 0.15 ACRES

WETLAND CR
 0.15 ACRES

WETLAND CS
 0.15 ACRES

WETLAND CT
 0.15 ACRES

WETLAND CU
 0.15 ACRES

WETLAND CV
 0.15 ACRES

WETLAND CW
 0.15 ACRES

WETLAND CX
 0.15 ACRES

WETLAND CY
 0.15 ACRES

WETLAND CZ
 0.15 ACRES

WETLAND DA
 0.15 ACRES

WETLAND DB
 0.15 ACRES

WETLAND DC
 0.15 ACRES

WETLAND DD
 0.15 ACRES

WETLAND DE
 0.15 ACRES

WETLAND DF
 0.15 ACRES

WETLAND DG
 0.15 ACRES

WETLAND DH
 0.15 ACRES

WETLAND DI
 0.15 ACRES

WETLAND DJ
 0.15 ACRES

WETLAND DK
 0.15 ACRES

WETLAND DL
 0.15 ACRES

WETLAND DM
 0.15 ACRES

WETLAND DN
 0.15 ACRES

WETLAND DO
 0.15 ACRES

WETLAND DP
 0.15 ACRES

WETLAND DQ
 0.15 ACRES

WETLAND DR
 0.15 ACRES

WETLAND DS
 0.15 ACRES

WETLAND DT
 0.15 ACRES

WETLAND DU
 0.15 ACRES

WETLAND DV
 0.15 ACRES

WETLAND DW
 0.15 ACRES

WETLAND DX
 0.15 ACRES

WETLAND DY
 0.15 ACRES

WETLAND DZ
 0.15 ACRES

WETLAND EA
 0.15 ACRES

WETLAND EB
 0.15 ACRES

WETLAND EC
 0.15 ACRES

WETLAND ED
 0.15 ACRES

WETLAND EE
 0.15 ACRES

WETLAND EF
 0.15 ACRES

WETLAND EG
 0.15 ACRES

WETLAND EH
 0.15 ACRES

WETLAND EI
 0.15 ACRES

WETLAND EJ
 0.15 ACRES

WETLAND EK
 0.15 ACRES

WETLAND EL
 0.15 ACRES

WETLAND EM
 0.15 ACRES

WETLAND EN
 0.15 ACRES

WETLAND EO
 0.15 ACRES

WETLAND EP
 0.15 ACRES

WETLAND EQ
 0.15 ACRES

WETLAND ER
 0.15 ACRES

WETLAND ES
 0.15 ACRES

WETLAND ET
 0.15 ACRES

WETLAND EU
 0.15 ACRES

WETLAND EV
 0.15 ACRES

WETLAND EW
 0.15 ACRES

WETLAND EX
 0.15 ACRES

WETLAND EY
 0.15 ACRES

WETLAND EZ
 0.15 ACRES

WETLAND FA
 0.15 ACRES

WETLAND FB
 0.15 ACRES

WETLAND FC
 0.15 ACRES

WETLAND FD
 0.15 ACRES

WETLAND FE
 0.15 ACRES

WETLAND FF
 0.15 ACRES

WETLAND FG
 0.15 ACRES

WETLAND FH
 0.15 ACRES

WETLAND FI
 0.15 ACRES

WETLAND FJ
 0.15 ACRES

WETLAND FK
 0.15 ACRES

WETLAND FL
 0.15 ACRES

WETLAND FM
 0.15 ACRES

WETLAND FN
 0.15 ACRES

WETLAND FO
 0.15 ACRES

WETLAND FP
 0.15 ACRES

WETLAND FQ
 0.15 ACRES

WETLAND FR
 0.15 ACRES

WETLAND FS
 0.15 ACRES

WETLAND FT
 0.15 ACRES

WETLAND FU
 0.15 ACRES

WETLAND FV
 0.15 ACRES

WETLAND FW
 0.15 ACRES

WETLAND FX
 0.15 ACRES

WETLAND FY
 0.15 ACRES

WETLAND FZ
 0.15 ACRES

WETLAND GA
 0.15 ACRES

WETLAND GB
 0.15 ACRES

WETLAND GC
 0.15 ACRES

WETLAND GD
 0.15 ACRES

WETLAND GE
 0.15 ACRES

WETLAND GF
 0.15 ACRES

WETLAND GG
 0.15 ACRES

WETLAND GH
 0.15 ACRES

WETLAND GI
 0.15 ACRES

WETLAND GJ
 0.15 ACRES

WETLAND GK
 0.15 ACRES

WETLAND GL
 0.15 ACRES

WETLAND GM
 0.15 ACRES

WETLAND GN
 0.15 ACRES

WETLAND GO
 0.15 ACRES

WETLAND GP
 0.15 ACRES

WETLAND GQ
 0.15 ACRES

WETLAND GR
 0.15 ACRES

WETLAND GS
 0.15 ACRES

WETLAND GT
 0.15 ACRES

WETLAND GU
 0.15 ACRES

WETLAND GV
 0.15 ACRES

WETLAND GW
 0.15 ACRES

WETLAND GX
 0.15 ACRES

WETLAND GY
 0.15 ACRES

WETLAND GZ
 0.15 ACRES

WETLAND HA
 0.15 ACRES

WETLAND HB
 0.15 ACRES

WETLAND HC
 0.15 ACRES

WETLAND HD
 0.15 ACRES

WETLAND HE
 0.15 ACRES

WETLAND HF
 0.15 ACRES

WETLAND HG
 0.15 ACRES

WETLAND HH
 0.15 ACRES

WETLAND HI
 0.15 ACRES

WETLAND HJ
 0.15 ACRES

WETLAND HK
 0.15 ACRES

WETLAND HL
 0.15 ACRES

WETLAND HM
 0.15 ACRES

WETLAND HN
 0.15 ACRES

WETLAND HO
 0.15 ACRES

WETLAND HP
 0.15 ACRES

WETLAND HQ
 0.15 ACRES

WETLAND HR
 0.15 ACRES

WETLAND HS
 0.15 ACRES

WETLAND HT
 0.15 ACRES

WETLAND HU
 0.15 ACRES

WETLAND HV
 0.15 ACRES

WETLAND HW
 0.15 ACRES

WETLAND HX
 0.15 ACRES

WETLAND HY
 0.15 ACRES

WETLAND HZ
 0.15 ACRES

WETLAND IA
 0.15 ACRES

WETLAND IB
 0.15 ACRES

WETLAND IC
 0.15 ACRES

WETLAND ID
 0.15 ACRES

WETLAND IE
 0.15 ACRES

WETLAND IF
 0.15 ACRES

WETLAND IG
 0.15 ACRES

WETLAND IH
 0.15 ACRES

WETLAND II
 0.15 ACRES

WETLAND IJ
 0.15 ACRES

WETLAND IK
 0.15 ACRES

WETLAND IL
 0.15 ACRES

WETLAND IM
 0.15 ACRES

WETLAND IN
 0.15 ACRES

WETLAND IO
 0.15 ACRES

WETLAND IP
 0.15 ACRES

WETLAND IQ
 0.15 ACRES

WETLAND IR
 0.15 ACRES

WETLAND IS
 0.15 ACRES

WETLAND IT
 0.15 ACRES

WETLAND IU
 0.15 ACRES

WETLAND IV
 0.15 ACRES

WETLAND IW
 0.15 ACRES

WETLAND IX
 0.15 ACRES

WETLAND IY
 0.15 ACRES

WETLAND IZ
 0.15 ACRES

WETLAND JA
 0.15 ACRES

WETLAND JB
 0.15 ACRES

WETLAND JC
 0.15 ACRES

WETLAND JD
 0.15 ACRES

WETLAND JE
 0.15 ACRES

WETLAND JF
 0.15 ACRES

WETLAND JG
 0.15 ACRES

WETLAND JH
 0.15 ACRES

WETLAND JI
 0.15 ACRES

WETLAND JJ
 0.15 ACRES

WETLAND JK
 0.15 ACRES

WETLAND JL
 0.15 ACRES

WETLAND JM
 0.15 ACRES

WETLAND JN
 0.15 ACRES

WETLAND JO
 0.15 ACRES

WETLAND JP
 0.15 ACRES

WETLAND JQ
 0.15 ACRES

WETLAND JR
 0.15 ACRES

WETLAND JS
 0.15 ACRES

WETLAND JT
 0.15 ACRES

WETLAND JU
 0.15 ACRES

WETLAND JV
 0.15 ACRES

WETLAND JW
 0.15 ACRES

WETLAND JX
 0.15 ACRES

WETLAND JY
 0.15 ACRES

WETLAND JZ
 0.15 ACRES

WETLAND KA
 0.15 ACRES

WETLAND KB
 0.15 ACRES

WETLAND KC
 0.15 ACRES

WETLAND KD
 0.15 ACRES

WETLAND KE
 0.15 ACRES

WETLAND KF
 0.15 ACRES

WETLAND KG
 0.15 ACRES

WETLAND KH
 0.15 ACRES

WETLAND KI
 0.15 ACRES

WETLAND KJ
 0.15 ACRES

WETLAND KK
 0.15 ACRES

WETLAND KL
 0.15 ACRES

WETLAND KM
 0.15 ACRES

WETLAND KN
 0.15 ACRES

WETLAND KO
 0.15 ACRES

WETLAND KP
 0.15 ACRES

WETLAND KQ
 0.15 ACRES

WETLAND KR
 0.15 ACRES

WETLAND KS
 0.15 ACRES

WETLAND KT
 0.15 ACRES

WETLAND KU
 0.15 ACRES

WETLAND KV
 0.15 ACRES

WETLAND KW
 0.15 ACRES

WETLAND KX
 0.15 ACRES

WETLAND KY
 0.15 ACRES

WETLAND KZ
 0.15 ACRES

WETLAND LA
 0.15 ACRES

WETLAND LB
 0.15 ACRES

WETLAND LC
 0.15 ACRES

WETLAND LD
 0.15 ACRES

WETLAND LE
 0.15 ACRES

WETLAND LF
 0.15 ACRES

WETLAND LG
 0.15 ACRES

WETLAND LH
 0.15 ACRES

WETLAND LI
 0.15 ACRES

WETLAND LJ
 0.15 ACRES

WETLAND LK
 0.15 ACRES

WETLAND LL
 0.15 ACRES

WETLAND LM
 0.15 ACRES

WETLAND LN
 0.15 ACRES

WETLAND LO
 0.15 ACRES

WETLAND LP
 0.15 ACRES

WETLAND LQ
 0.15 ACRES

WETLAND LR
 0.15 ACRES

WETLAND LS
 0.15 ACRES

WETLAND LT
 0.15 ACRES

WETLAND LU
 0.15 ACRES

WETLAND LV
 0.15 ACRES

WETLAND LW
 0.15 ACRES

WETLAND LX
 0.15 ACRES

WETLAND LY
 0.15 ACRES

WETLAND LZ
 0.15 ACRES

WETLAND MA
 0.15 ACRES

WETLAND MB
 0.15 ACRES

WETLAND MC
 0.15 ACRES

WETLAND MD
 0.15 ACRES

WETLAND ME
 0.15 ACRES

WETLAND MF
 0.15 ACRES

WETLAND MG
 0.15 ACRES

WETLAND MH
 0.15 ACRES

WETLAND MI
 0.15 ACRES

WETLAND MJ
 0.15 ACRES

WETLAND MK
 0.15 ACRES

WETLAND ML
 0.15 ACRES

WETLAND MN
 0.15 ACRES

WETLAND MO
 0.15 ACRES

WETLAND MP
 0.15 ACRES

WETLAND MQ
 0.15 ACRES

WETLAND MR
 0.15 ACRES

WETLAND MS
 0.15 ACRES

WETLAND MT
 0.15 ACRES

WETLAND MU
 0.15 ACRES

WETLAND MV
 0.15 ACRES

WETLAND MW
 0.15 ACRES

WETLAND MX
 0.15 ACRES

WETLAND MY
 0.15 ACRES

WETLAND MZ
 0.15 ACRES

WETLAND NA
 0.15 ACRES

WETLAND NB
 0.15 ACRES

WETLAND NC
 0.15 ACRES

WETLAND ND
 0.15 ACRES

WETLAND NE
 0.15 ACRES

WETLAND NF
 0.15 ACRES

WETLAND NG
 0.15 ACRES

WETLAND NH
 0.15 ACRES

WETLAND NI
 0.15 ACRES

WETLAND NJ
 0.15 ACRES

WETLAND NK
 0.15 ACRES

WETLAND NL
 0.15 ACRES

WETLAND NM
 0.15 ACRES

WETLAND NO
 0.15 ACRES

WETLAND NP
 0.15 ACRES

WETLAND NQ
 0.15 ACRES

WETLAND NR
 0.15 ACRES

WETLAND NS
 0.15 ACRES

WETLAND NT
 0.15 ACRES

WETLAND NU
 0.15 ACRES

WETLAND NV
 0.15 ACRES

WETLAND NW
 0.15 ACRES

WETLAND NX
 0.15 ACRES

WETLAND NY
 0.15 ACRES

WETLAND NZ
 0.15 ACRES

WETLAND OA
 0.15 ACRES

WETLAND OB
 0.15 ACRES

WETLAND OC
 0.15 ACRES

WETLAND OD
 0.15 ACRES

WETLAND OE
 0.15 ACRES

WETLAND OF
 0.15 ACRES

WETLAND OG
 0.15 ACRES

WETLAND OH
 0.15 ACRES

WETLAND OI
 0.15 ACRES

WETLAND OJ
 0.15 ACRES

WETLAND OK
 0.15 ACRES

WETLAND OL
 0.15 ACRES

WETLAND OM
 0.15 ACRES

WETLAND ON
 0.15 ACRES

WETLAND OO
 0.15 ACRES

WETLAND OP
 0.15 ACRES

WETLAND OQ
 0.15 ACRES

WETLAND OR
 0.15 ACRES

WETLAND OS
 0.15 ACRES

WETLAND OT
 0.15 ACRES

WETLAND OU
 0.15 ACRES

WETLAND OV
 0.15 ACRES

WETLAND OW
 0.15 ACRES

WETLAND OX
 0.15 ACRES

WETLAND OY
 0.15 ACRES

WETLAND OZ
 0.15 ACRES

WETLAND PA
 0.15 ACRES

WETLAND PB
 0.15 ACRES

WETLAND PC
 0.15 ACRES

WETLAND PD
 0.15 ACRES

WETLAND PE
 0.15 ACRES

WETLAND PF
 0.15 ACRES

WETLAND PG
 0.15 ACRES

WETLAND PH
 0.15 ACRES

WETLAND PI
 0.15 ACRES

WETLAND PJ
 0.15 ACRES

WETLAND PK
 0.15 ACRES

WETLAND PL
 0.15 ACRES

WETLAND PM
 0.15 ACRES

WETLAND PN
 0.15 ACRES

WETLAND PO
 0.15 ACRES

WETLAND PP
 0.15 ACRES

WETLAND PQ
 0.15 ACRES

WETLAND PR
 0.15 ACRES

WETLAND PS
 0.15 ACRES

WETLAND PT
 0.15 ACRES

WETLAND PU
 0.15 ACRES

WETLAND PV
 0.15 ACRES

WETLAND PW
 0.15 ACRES

WETLAND PX
 0.15 ACRES

WETLAND PY
 0.15 ACRES

WETLAND PZ
 0.15 ACRES

WETLAND QA
 0.15 ACRES

WETLAND QB
 0.15 ACRES

WETLAND QC
 0.15 ACRES

WETLAND QD
 0.15 ACRES

WETLAND QE
 0.15 ACRES

WETLAND QF
 0.15 ACRES

WETLAND QG
 0.15 ACRES

WETLAND QH
 0.15 ACRES

WETLAND QI
 0.15 ACRES

WETLAND QJ
 0.15 ACRES

WETLAND QK
 0.15 ACRES

WETLAND QL
 0.15 ACRES

WETLAND QM
 0.15 ACRES

WETLAND QN
 0.15 ACRES

WETLAND QO
 0.15 ACRES

WETLAND QP
 0.15 ACRES

WETLAND QQ
 0.15 ACRES

WETLAND QR
 0.15 ACRES

WETLAND QS
 0.15 ACRES

WETLAND QT
 0.15 ACRES

WETLAND QU
 0.15 ACRES

WETLAND QV
 0.15 ACRES

WETLAND QW
 0.15 ACRES

WETLAND QX
 0.15 ACRES

WETLAND QY
 0.15 ACRES

WETLAND QZ
 0.15 ACRES

WETLAND RA
 0.15 ACRES

WETLAND RB
 0.15 ACRES

WETLAND RC
 0.15 ACRES

WETLAND RD
 0.15 ACRES

WETLAND RE
 0.15 ACRES

WETLAND RF
 0.15 ACRES

WETLAND RG
 0.15 ACRES

WETLAND RH
 0.15 ACRES

WETLAND RI
 0.15 ACRES

WETLAND RJ
 0.15 ACRES

WETLAND RK
 0.15 ACRES

WETLAND RL
 0.15 ACRES

WETLAND RM
 0.15 ACRES

WETLAND RN
 0.15 ACRES

WETLAND RO
 0.15 ACRES

WETLAND RP
 0.15 ACRES

WETLAND RQ
 0.15 ACRES

WETLAND RR
 0.15 ACRES

WETLAND RS
 0.15 ACRES

WETLAND RT
 0.15 ACRES

WETLAND RU
 0.15 ACRES

WETLAND RV
 0.15 ACRES

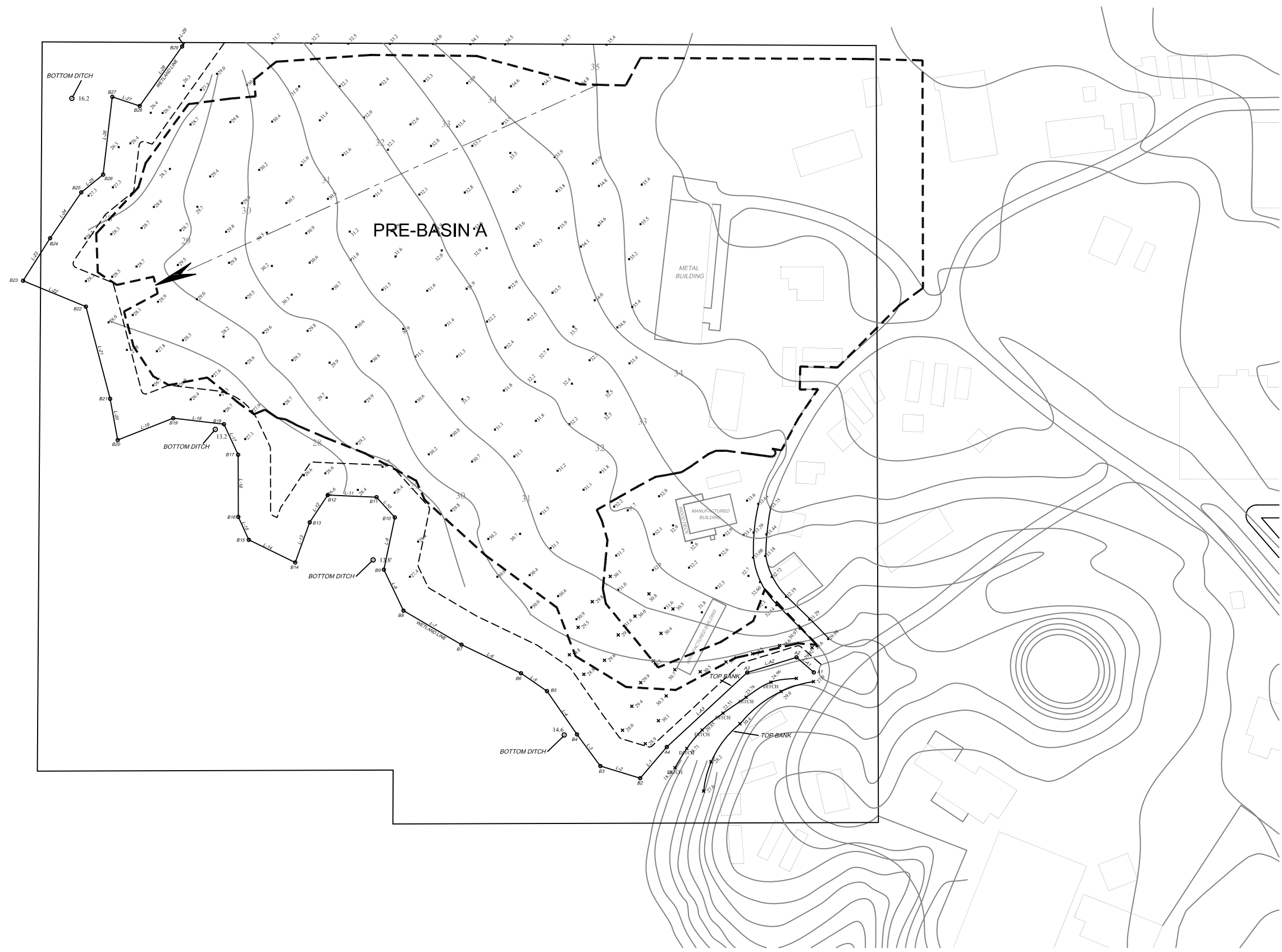
WETLAND RW
 0.15 ACRES

WETLAND RX
 0.15 ACRES

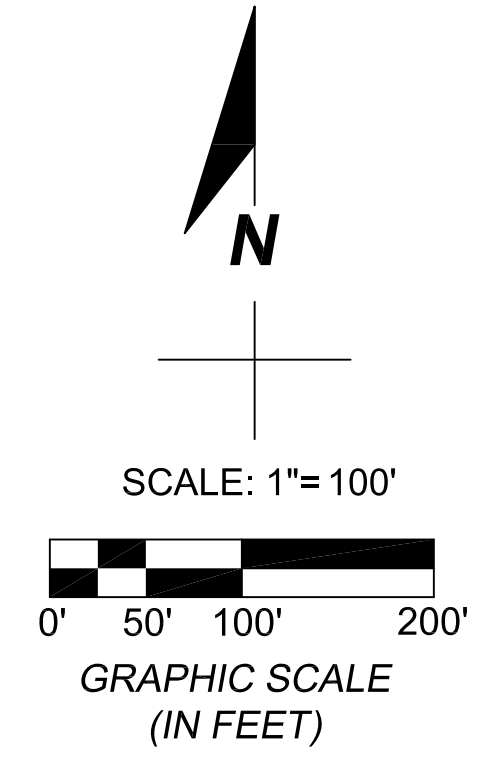
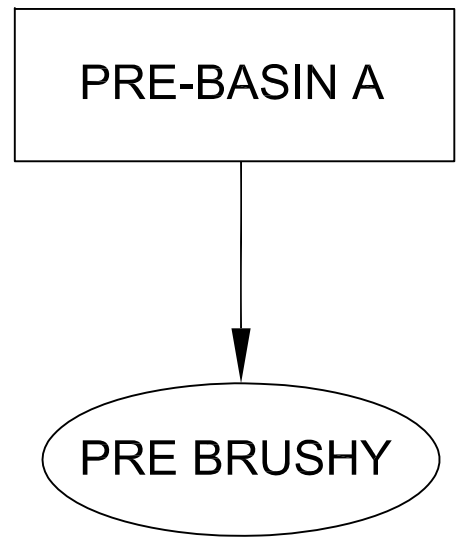
WETLAND RY
 0.15 ACRES

WETLAND RZ
 0.15 ACRES

WETLAND SA
 0.15 ACRES



PRE-BASIN A
 AREA = 6.12 AC
 CN = 66.78
 TC = 33.18 MIN

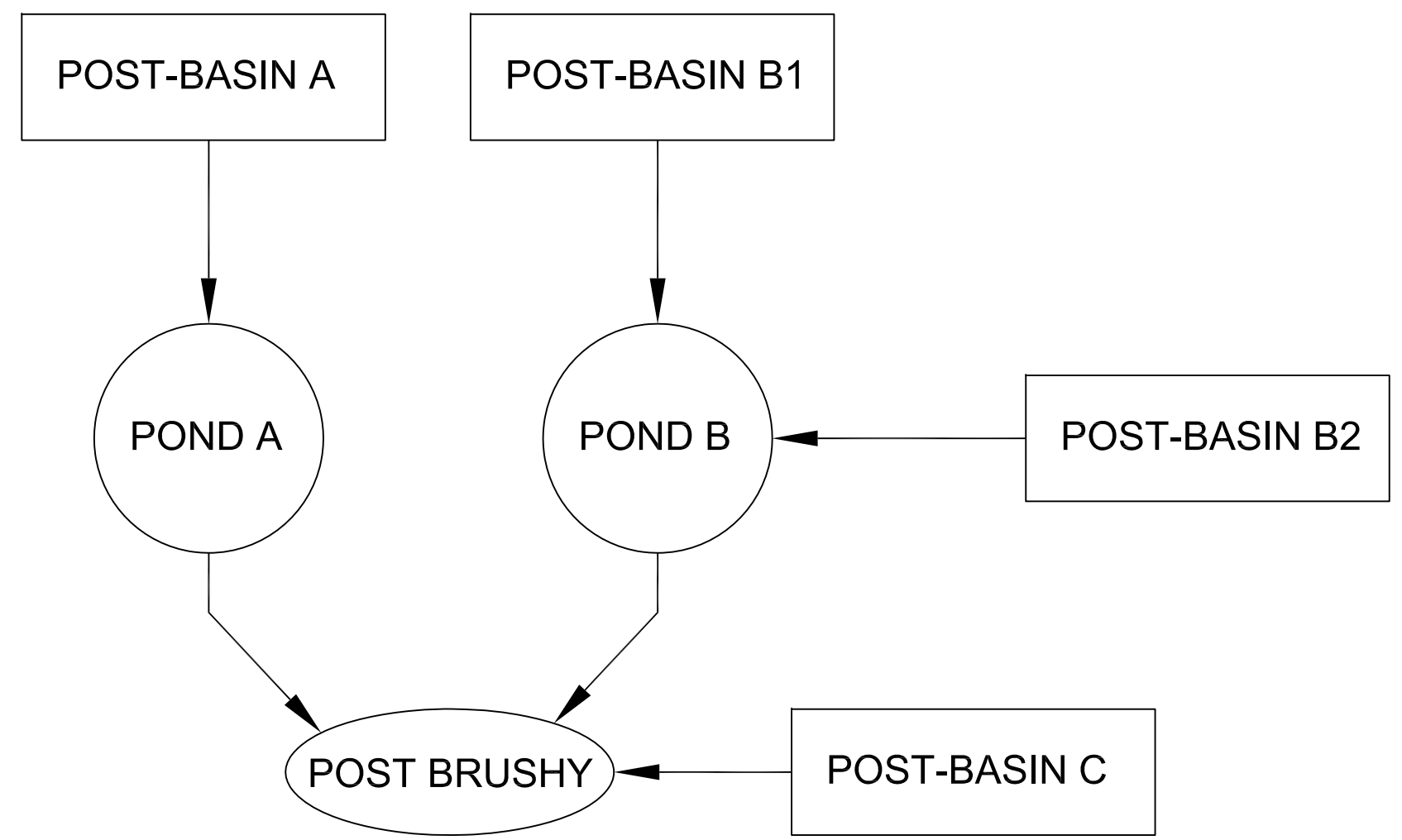
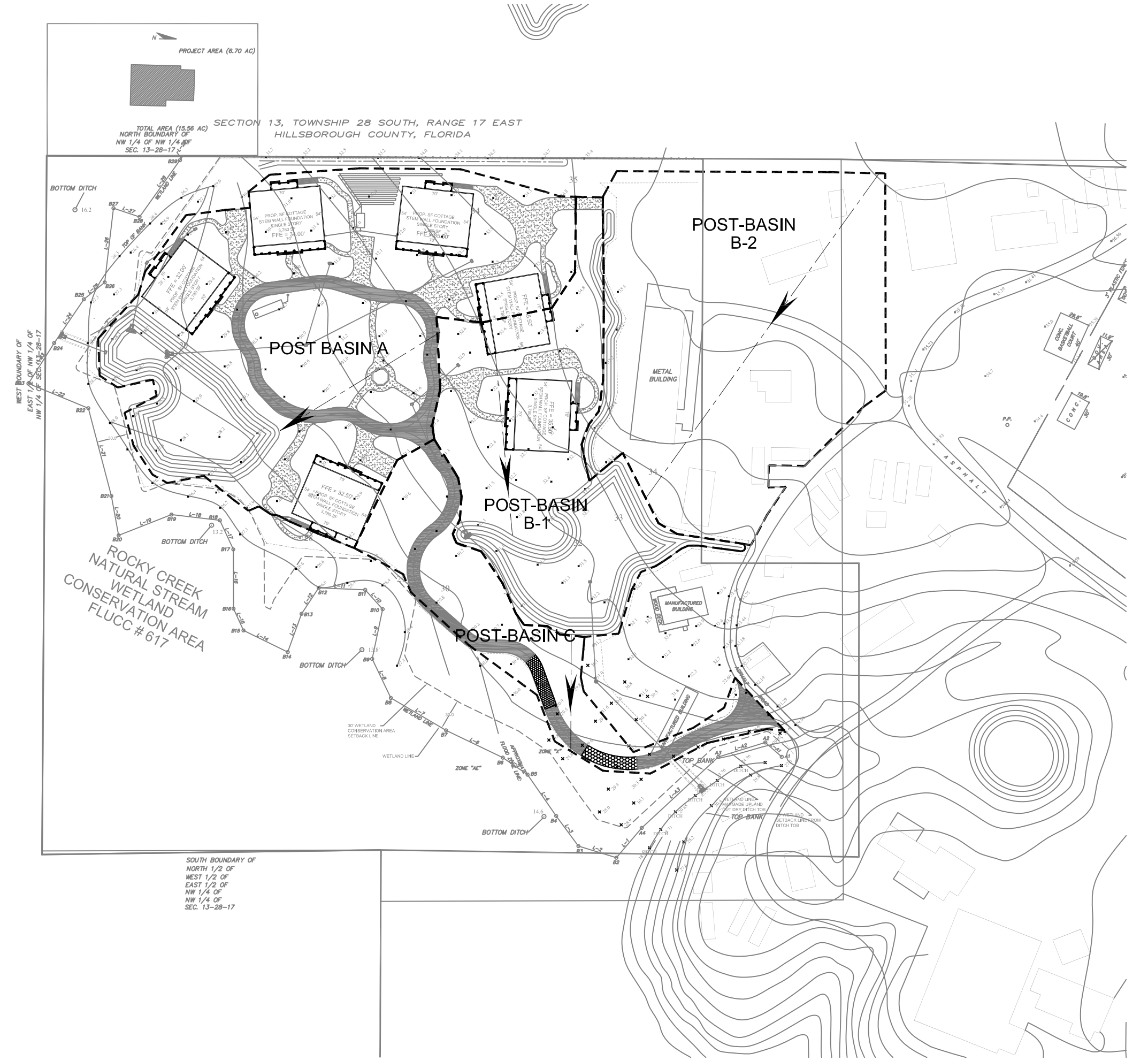


POST-BASIN A
 AREA = 2.43 AC
 CN = 83.58
 TC = 24.25 MIN

POST-BASIN B1
 AREA = 1.21 AC
 CN = 85.41
 TC = 21.62 MIN

POST-BASIN B2
 AREA = 1.94 AC
 CN = 70.62
 TC = 30.74 MIN

POST-BASIN C
 AREA = 0.65 AC
 CN = 73.80
 TC = 29.20 MIN



TAMPA CIVIL DESIGN
 PO BOX NO. 1787
 LUTZ, FL 33548-1787
 (727) 487-3497 PHONE
 (813) 482-9128 FAX

PROJECT:
COTTAGES OF HOPE
 11415 HOPE INTERNATIONAL DRIVE
 TAMPA, FL 33625
 STR 1328517E

CLIENT:
 HOPE INTERNATIONAL MINISTRIES, INC
 11415 HOPE INTERNATIONAL DRIVE
 TAMPA, FL 33625

REVISION	DATE
CONCEPTUAL DESIGN	3-8-10
HC REVIEW	5-20-10
HC CONST. PLANS SUB	6-30-10
REVISED PER HC & SWP/MAD	8-30-10
REVISED PER SWP/MAD	10-19-2010

DES: J.C.
 DRFT: J.O.

JEREMY COUCH, P.E.
 PROFESSIONAL ENGINEER # 70658

BASIN MAPS

SHEET NO:
 C-9

